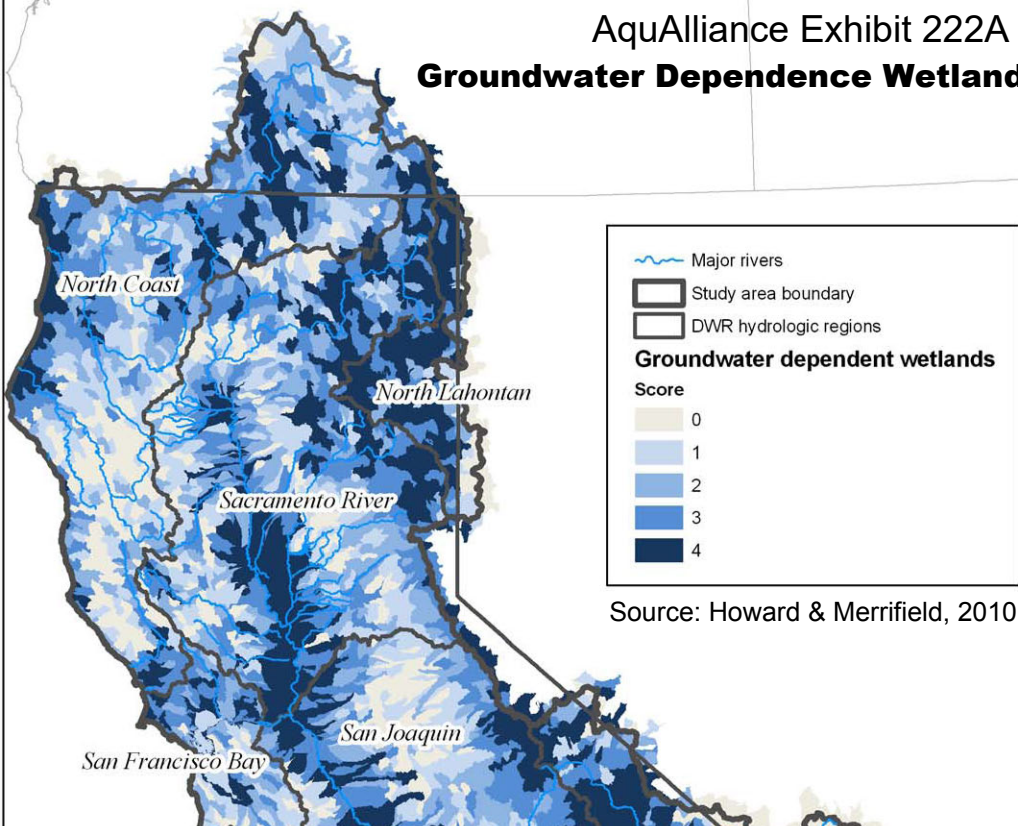


# AquAlliance Exhibit 222A

## Groundwater Dependence Wetlands

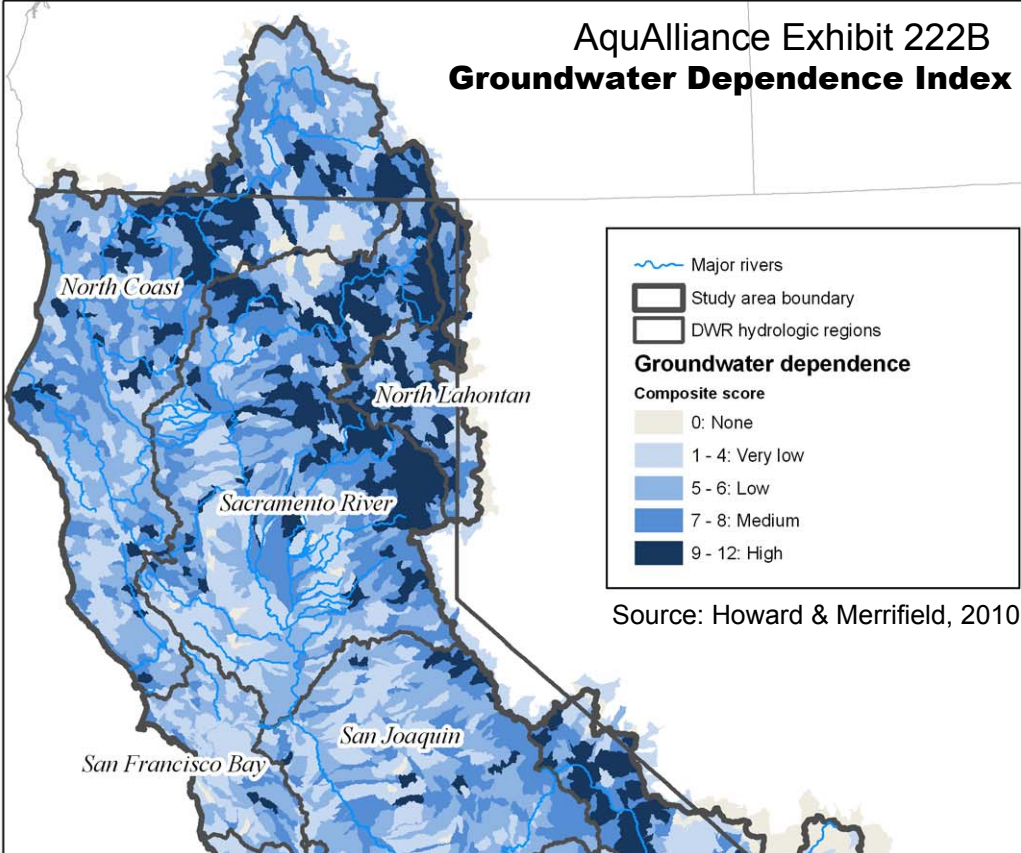


Source: Howard & Merrifield, 2010

Map of density of groundwater dependent wetlands and vegetation alliances in California. Map represents of density of groundwater dependent wetlands and vegetation alliances per HUC12 unit. HUCs were ranked as quartiles as follows: 1 = (.0475–1.97 ha/1,000ha); 2 = (1.99–7.842 ha/1,000ha); 3 = (7.844–24.808/1,000ha); 4 = 24.81–81.080 ha/1,000 ha.

# AquAlliance Exhibit 222B

## Groundwater Dependence Index



Groundwater dependence index. Map of index of groundwater dependence at the HUC12 scale in California. The index is the sum of groundwater dependent variables (springs, groundwater dependent wetlands and associated vegetation alliances and baseflow index). Based on quartile distribution of the sum, HUCs were ranked as follows: 0 = no groundwater dependent ecosystems; 1-3 = Very Low; 4-5 = Low; 6-7 = Medium; 8-12 = High.